

MOBILETY Product Suite

Batch Handheld/RF LAN/WAN Handheld



The **MOBILETY** Product Suite is a series of components developed to support the **MOBILETE** terminal application.

MOBILETE provides a flexible, modifiable engine capable of fully utilizing the current state of the art PDT hardware.

The powered by **MOBILETY** configurations provide a scalable, configurable solution for the full spectrum of PDT environments. These include Retail, Warehouse, Distribution, Transportation Logistics, Field Service, Hospitality, Health Care, Route Accounting, and Manufacturing.

MOBILETY is operational in Batch with ActiveSync communication, 802.11b/g for RF and, and CDME for Cellular.

MOBILETY also supports Bluetooth for device-to-device communications.

Interface Modules

The full **MOBILETY** suite consists of the following modules:

| | |
|---|--|
| MOBILETE ~ Terminal Application: | A multi-platform touch screen, configurable, WinCE based transaction engine application. |
| MOBILEDB ~ Database Manager: | A command and control console providing import, export, and editing tools for the MOBILETY databases. |
| MOBILERF ~ RF Interface: | A command and control console for 802.11b/g, TCP/IP RF installation of MOBILETY . |
| MOBILEPAY ~ Credit Interface: | An internet server that provides a secure credit interface to MOBILETY . |
| MOBILEED ~ Editor: | A Windows based application that allows for the modification and control of the MOBILETY engine. |
| MOBILEEM ~ Emulator: | A Windows based emulator that allows for the operation and testing of a MOBILETY configuration. |

The **MOBILETY** suite is developed and written in Microsoft C# and C.NET language, using Microsoft Visual Studio.

The **MOBILETE** terminal application is constructed around the **IPI** concept (Isolated Peripheral Interface). This concept has the transactional engine of **MOBILETE** isolated from the specific drivers required to operate the peripherals of today's handhelds.

MOBILETY portable processing made **easy**

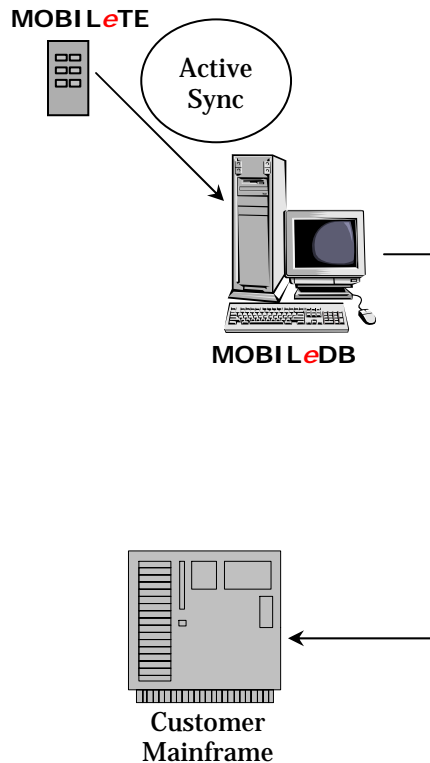
Communication Environments

The suite of products represents the ability to place a mobile device in a large variety of demanding environments:

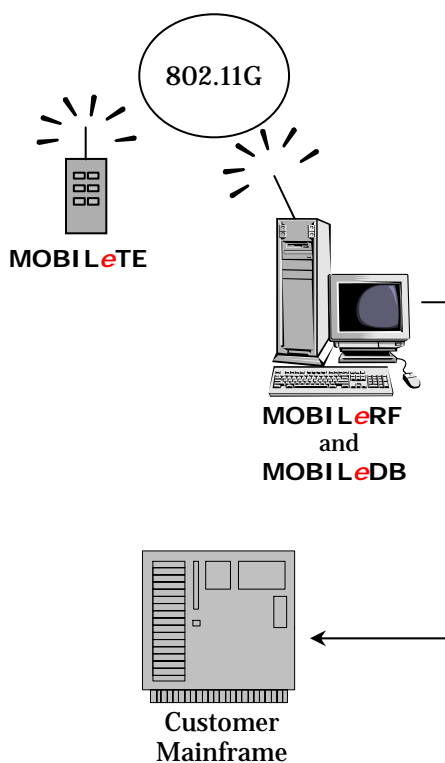
- Sales
- Ticketing
- Inventory
- Manufacturing Floor Control

The broadband of business requirements considered in the development of **MOBILETY** along with the IPI concept, allow for solutions based upon “Best of Breed” hardware and the ability to adapt to the specific needs of the end user.

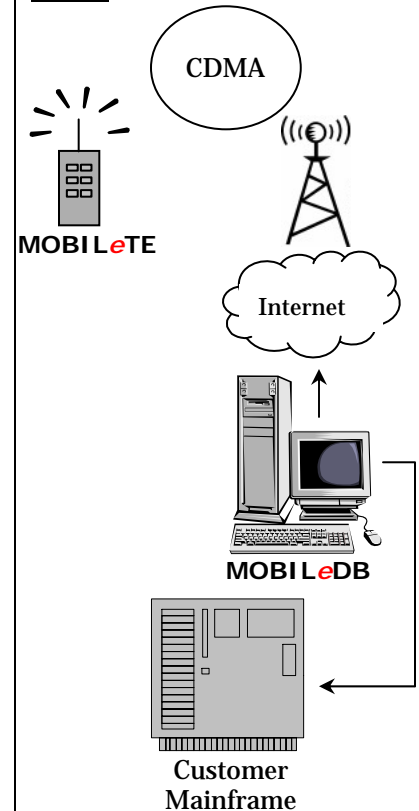
Batch



RF

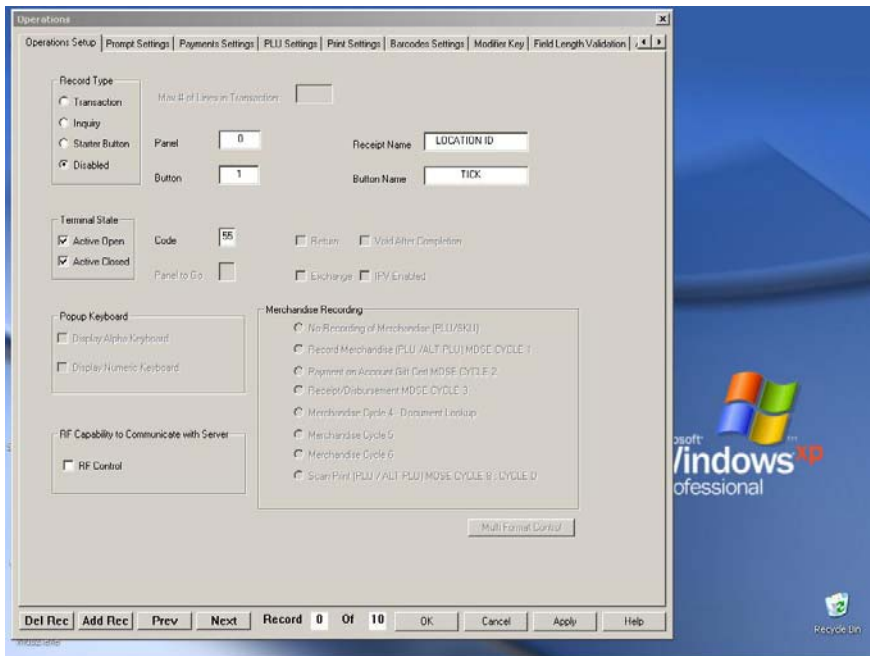


WAN

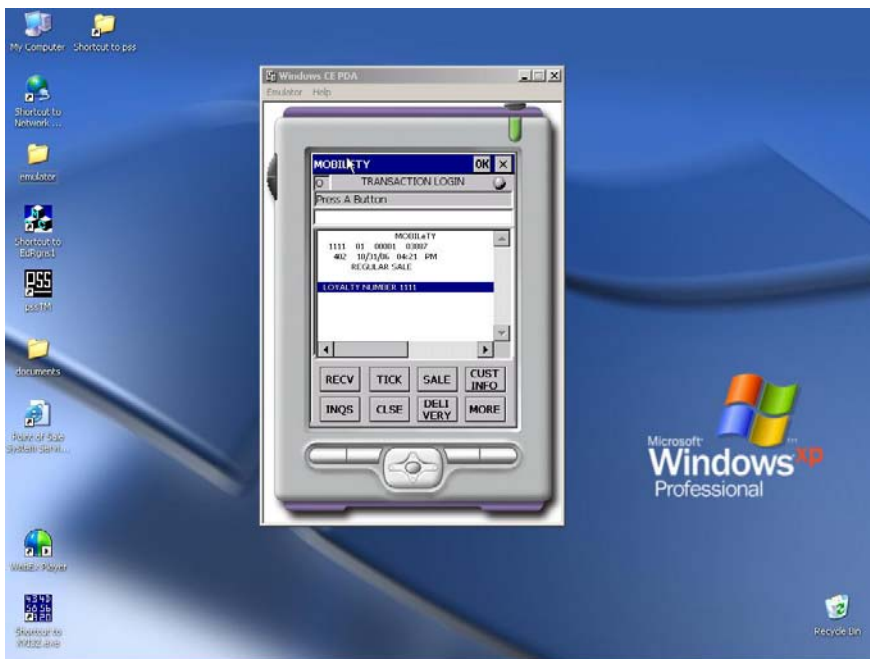


MOBILETY portable processing made easy

Tools



MOBILEeD (pictured left) provides a GUI intuitive configuration editor, allowing for rapid development of the user's business rules.



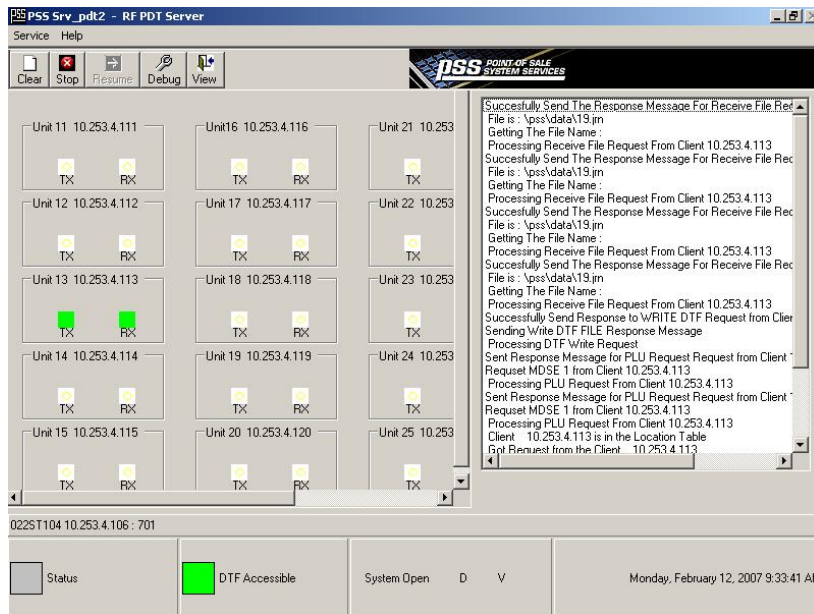
MOBILEeEM (pictured left) provides full **MOBILETY** functionality on any Windows based PC, allowing for testing and training.

MOBILETY portable processing made easy

Server Consoles



MOBILEDB (pictured at left) provides a command and control console for the **MOBILEDB** databases. **MOBILEDB** allows for storage, maintenance, and review of the data files supported by **MOBILETY**. **MOBILEDB** also provides for data import, export conversion, and formatting. **MOBILEDB** is utilized in all communication environments (batch, RF, and Cellular/WAN).



MOBILERF (pictured at left) provides a command and control console for the operation of the TCP/IP, 802.11b/g protocol RF LAN environment for the **MOBILETY** application.

MOBILETY portable processing made easy

Server Consoles

The screenshot shows the 'PSS Web Pay Log Viewer' application window. It features a 'Filter by' and 'Sort by' section, a 'Refresh' button, and an 'Auto Refresh' checkbox. A logo for 'PSS POINT OF SALE SYSTEM SERVICES' is visible. The main area contains a table with columns: Index, PsaSellerIndex, PSSdate, PSSTime, SellerCompany, Store, Term, SaleORCredit, HandORSwipe, Results, and ResultMessage. Below the table, there are status indicators for various services: IIS Service, HTTP SSL Service, W/W/V Pub Service, FTP Pub Service, and PSS Web Server, all shown as green. The Windows taskbar at the bottom shows the Start button, several open applications, and the system clock at 10:33 AM.

| Index | PsaSellerIndex | PSSdate | PSSTime | SellerCompany | Store | Term | SaleORCredit | HandORSwipe | Results | ResultMessage |
|-------|----------------|-----------|----------|------------------|-------|------|--------------|-------------|---------|--|
| 94 | 57 | 3/31/2006 | 8:49 AM | PSS Test Company | 001 | 0007 | C | | 105 | Credit error: V63H0B4099CD is a failed transaction |
| 70 | 57 | 3/24/2006 | 2:42 PM | PSS Test Company | 001 | 0007 | C | | 105 | Credit error: V63H0B4099CD is a failed transaction |
| 132 | 57 | 4/13/2006 | 10:23 AM | PSS Test Company | 001 | 2000 | S | S | 4 | Invalid amount |
| 105 | 57 | 4/12/2006 | 1:55 PM | PSS Test Company | 002 | 0099 | S | S | 23 | Invalid account number |
| 71 | 57 | 3/24/2006 | 2:43 PM | PSS Test Company | 002 | 0099 | S | S | 23 | Invalid account number |
| 101 | 57 | 4/5/2006 | 3:40 PM | PSS Test Company | 002 | 0100 | S | S | 23 | Invalid account number |
| 72 | 57 | 3/24/2006 | 2:43 PM | PSS Test Company | 002 | 0100 | S | S | 23 | Invalid account number |
| 107 | 57 | 4/12/2006 | 2:04 PM | PSS Test Company | 007 | 1223 | S | H | 126 | Under review by Fraud Service |
| 73 | 57 | 3/24/2006 | 2:43 PM | PSS Test Company | 007 | 1223 | S | H | 126 | Under review by Fraud Service |
| 127 | 57 | 4/12/2006 | 6:34 PM | PSS Test Company | 012 | 0056 | S | S | 23 | Invalid account number |
| 126 | 57 | 4/12/2006 | 6:34 PM | PSS Test Company | 012 | 0056 | S | S | 23 | Invalid account number |
| 104 | 57 | 4/12/2006 | 9:37 AM | PSS Test Company | 012 | 0056 | S | S | 23 | Invalid account number |
| 100 | 57 | 3/31/2006 | 11:14 AM | PSS Test Company | 012 | 0056 | S | S | 23 | Invalid account number |
| 99 | 57 | 3/31/2006 | 9:01 AM | PSS Test Company | 012 | 0056 | S | S | 23 | Invalid account number |
| 98 | 57 | 3/31/2006 | 8:56 AM | PSS Test Company | 012 | 0056 | S | S | 23 | Invalid account number |
| 95 | 57 | 3/31/2006 | 8:49 AM | PSS Test Company | 012 | 0056 | S | S | 23 | Invalid account number |
| 92 | 57 | 3/27/2006 | 11:35 AM | PSS Test Company | 012 | 0056 | S | S | 23 | Invalid account number |
| 89 | 57 | 3/27/2006 | 11:33 AM | PSS Test Company | 012 | 0056 | S | S | 23 | Invalid account number |
| 86 | 57 | 3/27/2006 | 10:08 AM | PSS Test Company | 012 | 0056 | S | S | 23 | Invalid account number |
| 80 | 57 | 3/27/2006 | 9:53 AM | PSS Test Company | 012 | 0056 | S | S | 23 | Invalid account number |
| 106 | 57 | 4/12/2006 | 2:02 PM | PSS Test Company | 013 | 1224 | S | H | 126 | Under review by Fraud Service |
| 79 | 57 | 3/27/2006 | 9:52 AM | PSS Test Company | 013 | 1224 | S | H | 126 | Under review by Fraud Service |
| 78 | 57 | 3/27/2006 | 9:38 AM | PSS Test Company | 013 | 1224 | S | H | 126 | Under review by Fraud Service |
| 77 | 57 | 3/27/2006 | 9:24 AM | PSS Test Company | 013 | 1224 | S | H | 126 | Under review by Fraud Service |
| 74 | 57 | 3/24/2006 | 2:44 PM | PSS Test Company | 013 | 1224 | S | H | 126 | Under review by Fraud Service |
| 128 | 57 | 4/12/2006 | 6:34 PM | PSS Test Company | 111 | 2222 | C | | 105 | Credit error: V63H0B4099CD is a failed transaction |
| 123 | 57 | 4/12/2006 | 6:33 PM | PSS Test Company | 111 | 2222 | C | | 105 | Credit error: V63H0B4099CD is a failed transaction |
| 122 | 57 | 4/12/2006 | 6:33 PM | PSS Test Company | 111 | 2222 | C | | 105 | Credit error: V63H0B4099CD is a failed transaction |

MOBILEPAY provides internet based processing of credit card authorization and settlement.



MOBILETY, via MOBILEPAY, uses PayPal to provide secure TCP/IP communications.

MOBILETY, via MOBILEPAY, uses PayPal to provide credit card processing and authorization.

PayPal has quickly become a global leader in online payment solutions with 100 million account members worldwide. It is available in 103 countries and regions around the world, buyers and sellers on eBay, online retailers, online businesses, and traditional offline businesses are transacting with PayPal.

PayPal has received close to 20 awards for technical excellence from the internet industry and the business community at large -most recently the 2003 Webby Award for Best Finance Site and the 2003 Webby People's Voice Award.

